

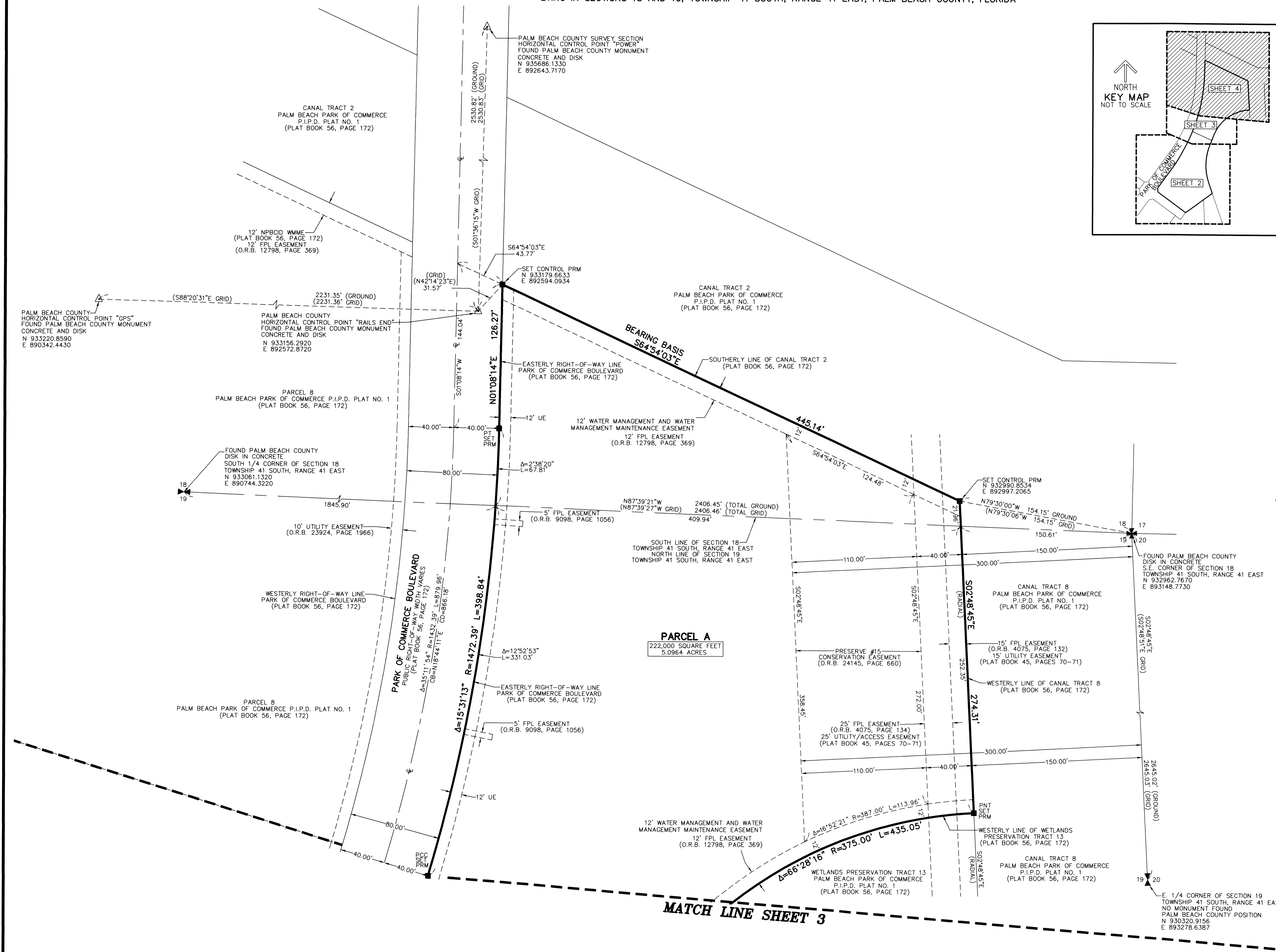
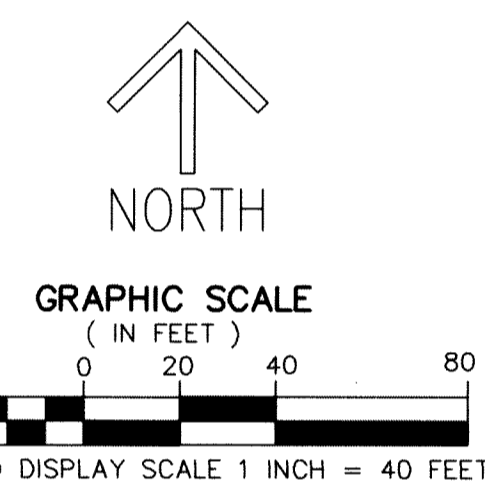
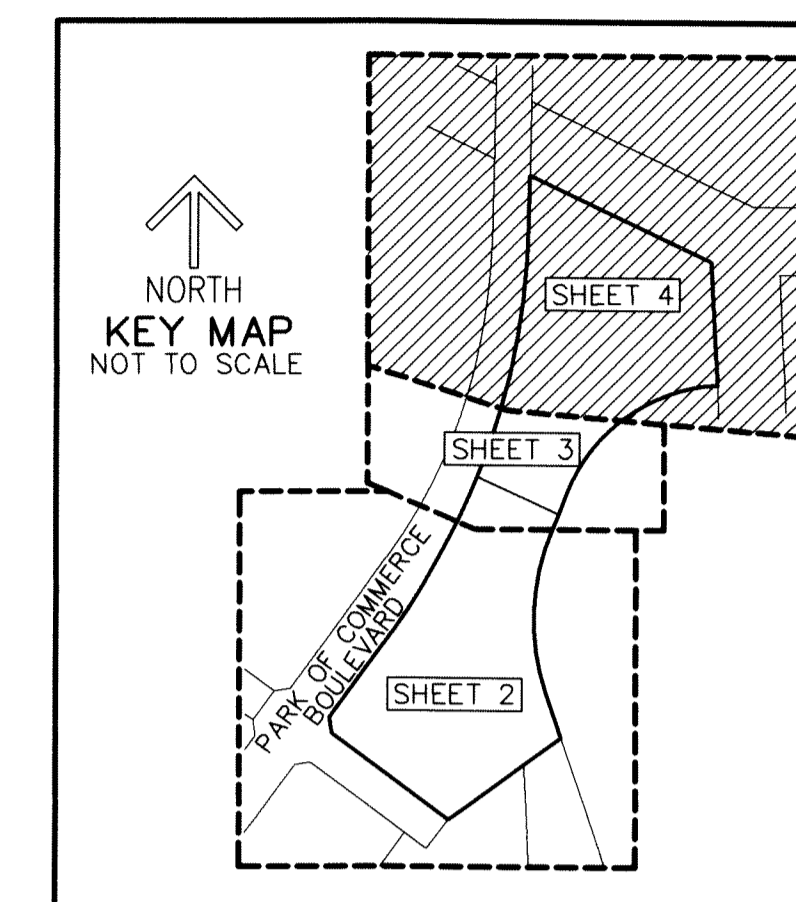
THIS INSTRUMENT PREPARED BY
 DAVID P. LINDLEY
 OF
CAULFIELD and WHEELER, INC.
 SURVEYORS - ENGINEERS - PLANNERS
 7900 GLADES ROAD, SUITE 100
 BOCA RATON, FLORIDA 33434 - (561)392-1991

PALM BEACH PARK OF COMMERCE, P.I.P.D. - PLAT 24

BEING A REPLAT OF LOTS 13C AND 14C, PALM BEACH PARK OF COMMERCE, P.I.P.D., PLAT NO. 1,
 AS RECORDED IN PLAT BOOK 56, PAGES 172 THROUGH 176 OF THE PUBLIC RECORDS OF PALM BEACH COUNTY, FLORIDA,
 TOGETHER WITH A PORTION OF CALBUT GENPAR TRACT A,
 AS RECORDED IN PLAT BOOK 45, PAGES 70 AND 71 OF THE PUBLIC RECORDS OF PALM BEACH COUNTY, FLORIDA,
 TOGETHER WITH A PORTION OF SECTION 19, TOWNSHIP 41 SOUTH, RANGE 41 EAST,
 LYING IN SECTIONS 18 AND 19, TOWNSHIP 41 SOUTH, RANGE 41 EAST, PALM BEACH COUNTY, FLORIDA

117

SHEET 4 OF 4



NOTES
COORDINATES, BEARINGS AND DISTANCES
 COORDINATES SHOWN ARE GRID
 DATUM = NAD 83 1990 ADJUSTMENT
 ZONE = FLORIDA EAST
 LINEAR UNIT = US SURVEY FEET
 COORDINATE SYSTEM 1983 STATE PLANE
 TRANSVERSE MERCATOR PROJECTION
 ALL DISTANCES ARE GROUND, UNLESS OTHERWISE NOTED
 SCALE FACTOR = 1.00000545
 GROUND DISTANCE X SCALE FACTOR = GRID DISTANCE
 ROTATION ANGLE FROM PLAT BEARINGS TO GRID BEARINGS
 IS COUNTERCLOCKWISE 00°00'06"

S02°48'45"E (PLAT BEARING)
 S02°48'51"E (GRID BEARING)
 EAST LINE OF THIS PLAT

LEGEND/ABBREVIATIONS

- CL - CENTERLINE
- Δ - DELTA (CENTRAL ANGLE)
- CB - CHORD BEARING
- CD - CHORD DISTANCE
- DE - DRAINAGE EASEMENT
- E - EASTING (WHEN USED WITH COORDINATES)
- FPL - FLORIDA POWER & LIGHT COMPANY
- L - ARC LENGTH
- LB - LICENSED BUSINESS
- NPBCID - NORTHERN PALM BEACH COUNTY IMPROVEMENT DISTRICT
- N - NORTHING (WHEN USED WITH COORDINATES)
- O.R.B. - OFFICIAL RECORD BOOK
- P.I.P.D. - PLANNED INDUSTRIAL PARK DEVELOPMENT
- PC - POINT OF CURVATURE
- PCC - POINT OF COMPOUND CURVATURE
- PNT - POINT OF NON-TANGENCY
- PRC - POINT OF REVERSE CURVATURE
- PT - POINT OF TANGENCY
- R - RADIUS
- UE - UTILITY EASEMENT
- WME - WATER MANAGEMENT ACCESS EASEMENT
- PRM - DENOTES PERMANENT REFERENCE MONUMENT SET 4" X 2" CONCRETE MONUMENT WITH ALUMINUM DISK STAMPED "C&W PRM LB3591"

MATCH LINE SHEET 3

E. 1/4 CORNER OF SECTION 19
 TOWNSHIP 41 SOUTH, RANGE 41 EAST
 NO MONUMENT FOUND
 PALM BEACH COUNTY POSITION
 N 930320.9156
 E 893278.6387